

Le Sueur County Environmental Services

NEWSLETTER

October 1, 2021

This Issue:

- 2| Le Sueur County Shoreline Residents-Help Protect Our Lakes
- 3| Lower Minnesota River East One Watershed One Plan
- 4-5| Cannon River One Watershed One Plan Updates
- 6| Grants and Programs Currently Available
- 7| Water Resource Spotlight
- 8| Featured Minnesota Native Plant
- 9| Featured Non Native Plant
- 10| Contact Information

Mailing Address: 88 S Park Ave, Le Center,
MN 56057

Physical Address: 515 S Maple Ave, Le
Center, MN 56057

Phone: 507-357-8538

Email: environmentalservices@co.le-sueur.mn.us



Le Sueur County Shoreline Residents – Help Protect Our Lakes

Le Sueur County was recently awarded a grant from the Minnesota DNR. Le Sueur County will be partnering with Lake Associations to communicate with residents to dry their used docks, rafts, lifts, and associated equipment for 21 days before moving anything to a different lake.

Did you know? Drying your equipment for 21 days is required by law before you move it to or from a different lake (MN State Statute 84D.10 Subd. 4).

What can you do to help out?

We are looking for participants with this program!

- Are you interested in being more involved with your community when it comes to preventing and limiting the spread of AIS?
- Would you like to attend trainings and/or demonstrations to learn how to properly clean and dry your docks, rafts, lifts, and other associated equipment?
- Are you planning on moving and bringing your water related equipment to a different lake?
- Do you plan on selling your water related equipment to other lakeshore owners?
- Have you just moved to a lakeshore home and want to purchase water related equipment?

If you answered yes to any of the questions, then this program is for you! In order to participate with the program, please fill out the commitment and participation form. You may either contact your Lake Association, contact Holly Kalbus (507-357-8540, email address located below), or visit the Le Sueur County AIS page ([Le Sueur County Aquatic Invasive Species Education and Outreach Page](#)) to access the form. Once you have filled out the form it can either be emailed to hkalbus@co.le-sueur.mn.us or mailed to Le Sueur County Environmental Services, Holly Kalbus, 88 South Park Ave, Le Center, MN 56057.

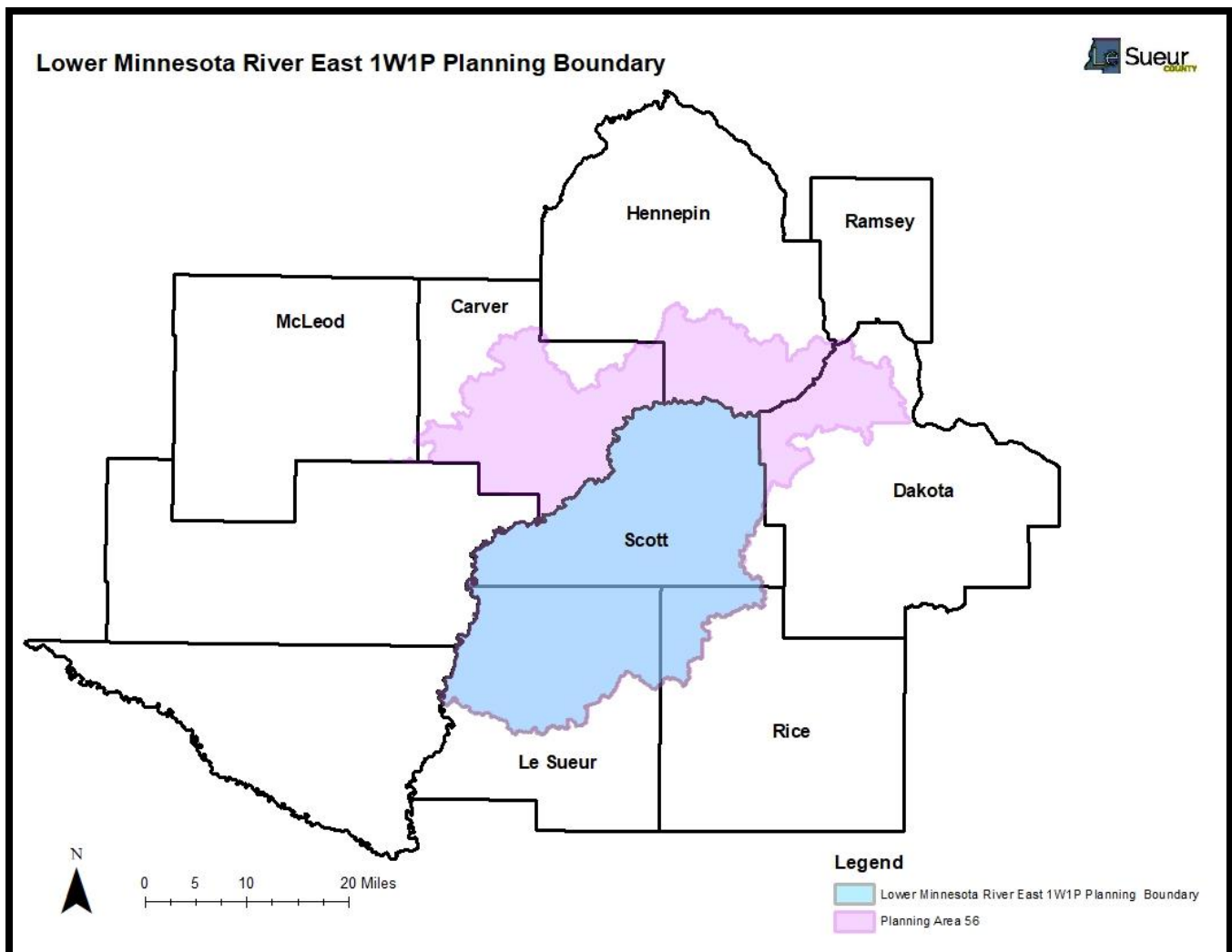


Lower Minnesota River East One Watershed One Plan

Le Sueur County and Le Sueur Soil & Water Conservation District (SWCD) in partnership with Rice County, Rice SWCD, Scott County, Scott Watershed Management Organization, Scott SWCD, and the Lower Minnesota River Watershed District applied for a planning grant to start the Lower Minnesota River East One Watershed One Plan (1W1P). The Minnesota Board of Water and Soil Resources (BWSR) board met in August to determine which proposals would be funded. The Lower Minnesota River East 1W1P proposal was approved.

Over the next few years, counties, soil and water conservations districts, water management organizations, watershed districts, municipalities, state agencies, and other stakeholder groups will be working together to develop a 10-year plan for this watershed to help improve, protect, and restore resources. The Lower Minnesota River Watershed was divided into a few planning areas due to the sheer size of the watershed, the different land use activities, and lastly the physical characteristics of the watershed.

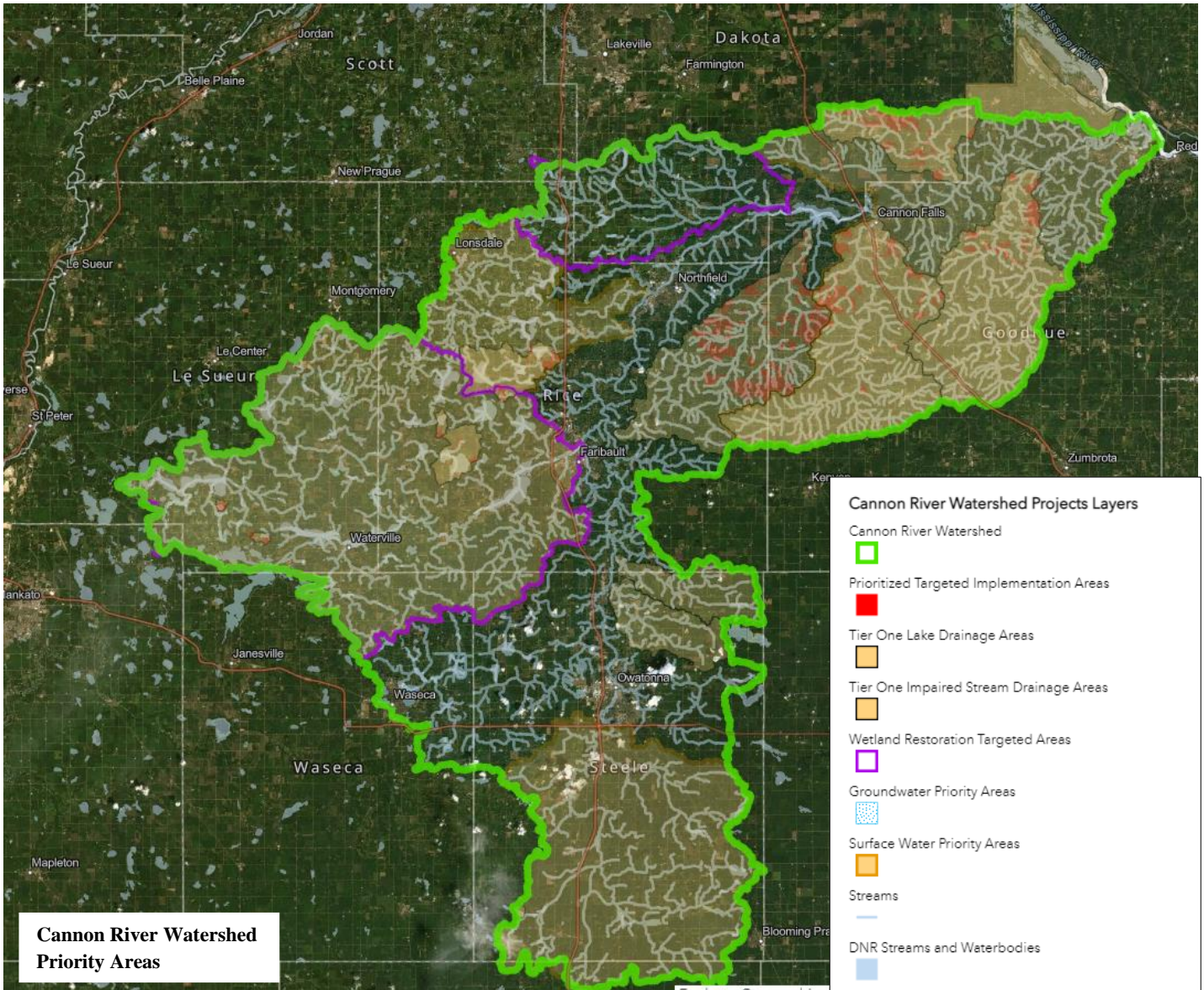
The image below is the anticipated planning boundary for the Lower Minnesota River East 1W1P. We are still in the very early stages of planning efforts, but stay tuned for more updates!



Cannon River One Watershed One Plan Updates

To stay up to date and learn more about the Cannon River One Watershed One Plan, please visit the [Cannon River Watershed Joint Powers Board](#) page, which is hosted on the Rice Soil and Water Conservation District's website.

- To view an interactive map of the watershed and see activities that are taking place, please click on Cannon River Projects for Public Exploration link under the [Resource Concerns & Improvements](#) Page.



Cannon River One Watershed One Plan Updates

The list located below are the projects and practices that are currently underway within the Cannon River Watershed.

- Soil Health Days/Event with agricultural producers & farmers
- Developing an Education and Outreach Plan for the Cannon River Watershed
- Implementing soil health practices
 - Cover Crops
- Implementing Structural practices
 - Water and Sediment Control Basins
- Implementing Streambank Stabilization Projects
- Subsurface Sewage Treatment System (SSTS) Inventory
 - Shoreland residents adjacent to a specific water resource(s) receive a compliance inspection to determine if septic system is compliant or noncompliant
- Developing Lake Management Plans for priority water resources
 - Address internal sources of pollutants to reduce pollutant loads of priority lakes
 - Water Monitoring/Sampling
 - Collecting additional data on lake and land use characteristics such as aquatic vegetation, septic systems, wells, etc.
- Shoreline Inventories for Natural Environment Lakes
 - Document existing land use activities
 - Maintain natural shorelines
 - Implement best management practices for those areas that are developed or have existing erosion and runoff issues
- Developing and creating hydrologic models and data for areas within the Cannon River Watershed (Straight River, Vermillion River, and Beaver Lake subwatersheds)
 - Further target and prioritize areas for projects and practices in order to reduce pollutants

Grants and Programs Currently Available



SSTS Low Income

This program assists landowners with the financial costs to design, install, repair, and replace a septic system on residential property that has been deemed an imminent threat to public health or is failing to protect groundwater. Cost-share is limited to 75% of the total cost not to exceed \$10,000 maximum for the design and installation of a conforming septic system. We received an extension for this grant until December 31, 2021. There are no longer grant funds available.

Water Monitoring

Currently, Le Sueur County is able to test your drinking water for Nitrates and Phosphorus. The cost is \$15/test. If you are interested in testing your water for any other pollutants/contaminants, it will need to be completed at a certified lab. The best time to test your water is in the spring. During this time, the amount of nutrients and sediments present in water are typically higher due to the snow melt and large rain events. Le Sueur County's water monitoring program will be ending on December 31, 2021.





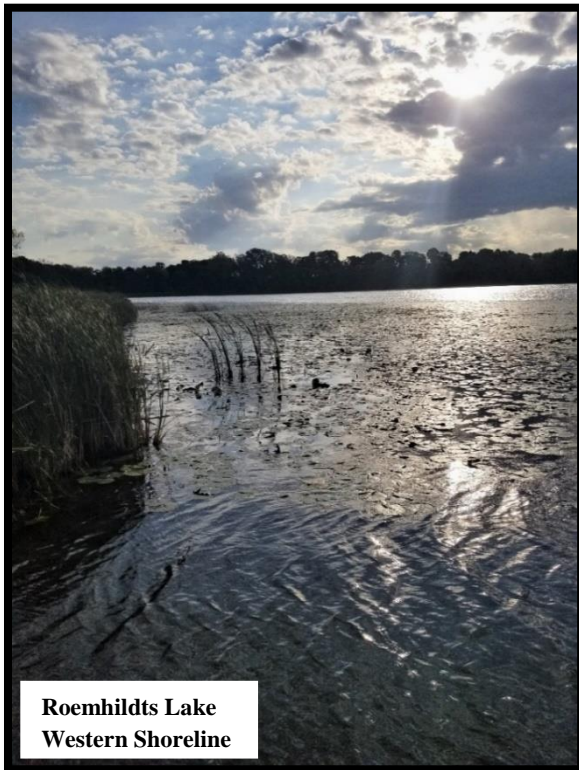
Water Resource Spotlight

This week we are spotlighting Roemhildts Lake!

Roemhildts Lake is located roughly a half mile south of German Lake. The lake has a surface area of roughly 71.3 acres, and a maximum depth of 60 feet. The landscape around the lake is predominately wetlands, forested areas, and agriculture. There is very little development; just a few houses and a DNR public access. Roemhildts Lake has no inlets or outlets; therefore, it is groundwater fed.



Roemhildts Lake Public Water Access



Roemhildts Lake Western Shoreline

Roemhildts Lake is considered a priority, protection lake, in the Cannon River One Watershed One Plan. Currently, it is meeting state water quality standards and is not considered impaired. Continued protection of this water resource should be focused on efforts such as shoreland protection and best management practices that protect groundwater. Some examples of practices include cover crops, reduced tillage, nutrient management, native shoreline buffers, compliant septic systems, sealing abandoned wells, and testing private wells for pollutants.

Minnesota Native Plant

Gray-headed Coneflower (*Ratibida pinnata*)

Gray-headed Coneflower is a perennial that is a part of the Asteraceae (Aster) family. It grows 3 to 6 feet tall with numerous stems that comprise one plant. The leaves are compound, lanceolate shaped (long and pointed leaf tip), and have a lobed margin (leaf edge). Furthermore, the leaves have an alternate arrangement on the stem. A mature plant has a deep and drought tolerant tap root. The inflorescence (flower head) has a gray central disk with downward facing yellow ray-like petals which blooms from July through September. Gray-headed Coneflowers prefer well drained soils and full sun. You'll find this plant thriving in prairies, savannas, and grasslands. These plants are great for pollinators and other wildlife, and are often used in native restoration and wildlife plantings projects.



Non Native Plant

Queen Anne's Lace (*Daucus carota*)

Queen Anne's Lace is a biennial that is a part of the Apiaceae (Carrot/Parsnip/Celery) family. It originates from Europe and was originally introduced for medicinal purposes. It is now considered invasive, a noxious weed, and should be eradicated. The plants grow roughly 1 to 4 feet tall. The leaves are compound, have an alternate arrangement on the stem, and resemble ferns and/or feathers. Also, the leaves increase in size further down the stem. A mature plant has slender yellow taproot. The flowers form an umbel which contains numerous tiny white flowers, also known as a compound flower. Additionally, the umbel has a dark purple center. The flowers bloom from May to October. Queen Anne's Lace prefers dry soils, and tend to thrive on roadsides, fields, and open areas. These plants establish quickly and grow well in disturbed areas, but are not overly aggressive which allows natives to grow and outcompete Queen Anne's Lace.



Contact Information

Environmental Services Department

Planning & Zoning, Feedlots, Solid Waste, & Septics

Phone: 507-357-8538

Email: environmentalservices@co.le-sueur.mn.us

Environmental Resources Specialist/Water Planner-Holly Kalbus

Phone: 507-357-8540

Email: hkalbus@co.le-sueur.mn.us

Le Sueur County Soil & Water Conservation District (SWCD)

Phone: 507-419-0365

Mike Schultz-District Manager

Email: mschultz@co.le-sueur.mn.us

Sue Prchal-Program Specialist

Email: sprchal@co.le-sueur.mn.us

Joe Jirik-District Technician

Email: jjirik@co.le-sueur.mn.us

Nik Kadel-Ditch Inspector

Email: nkadel@co.le-sueur.mn.us

Karl Schmidtke-Resource Technician

Email: kschmidtke@co.le-sueur.mn.us

Natural Resource Conservation Service (NRCS)

Steve Breaker-District Conservationist

Phone: 507-357-4908

steve.breaker@mn.usda.gov

Minnesota Department of Natural Resources (DNR)

Garry Bennett-Area Hydrologist

Phone: 320-753-0344

Email: garry.bennett@state.mn.us

Todd Piepho-Area Hydrologist

Phone: 507-421-1991

Email: todd.piepho@state.mn.us

Carli Wagner-Aquatic Invasive Species Specialist

507-389-8812

Email: Carli.Wagner@state.mn.us

To see which DNR staff is the Area Hydrologist for your region, please click on the following link:

https://files.dnr.state.mn.us/waters/area_hydros.pdf